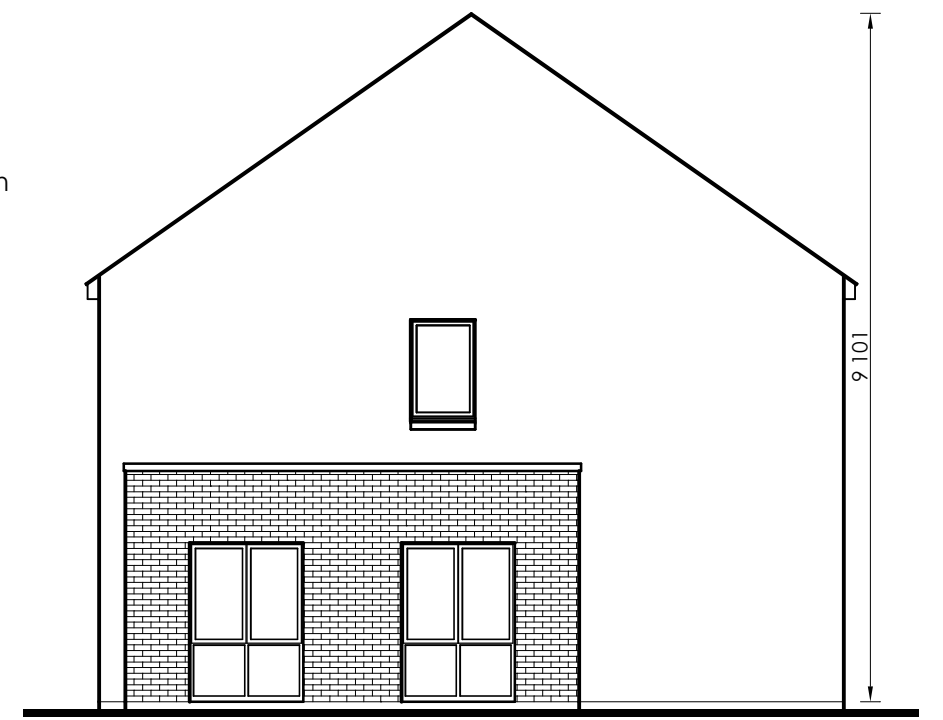


Front Elevation

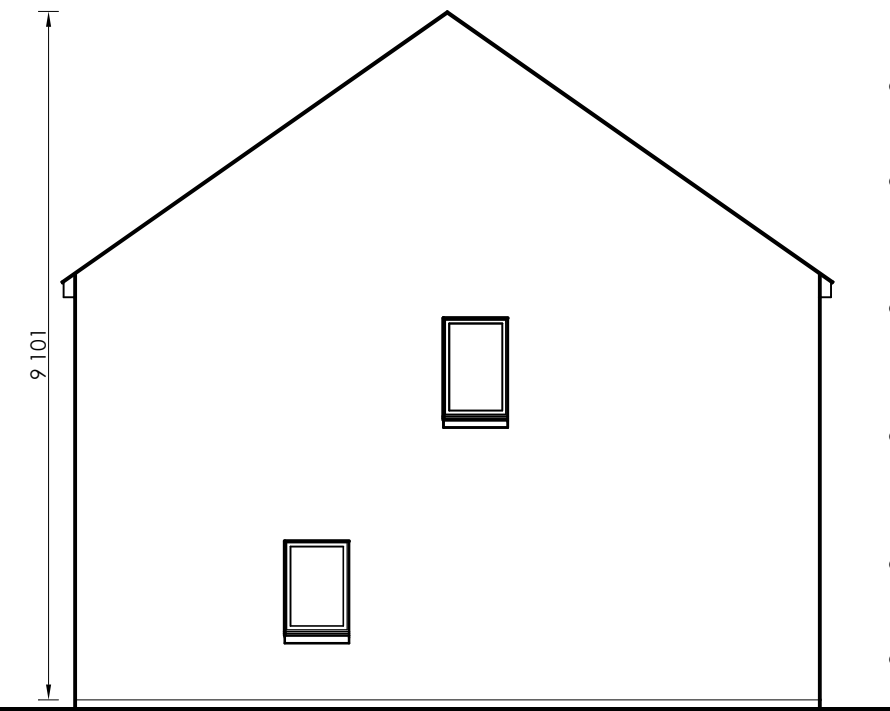
Scale 1:100

- Selected slate/tile to roof
- PVC fascia, soffit & guttering in selected colour
- Double/triple glazed PVC windows in selected colour
- Selected brick where indicated
- Selected plaster finish
- Smooth plaster plinth



Side Elevation

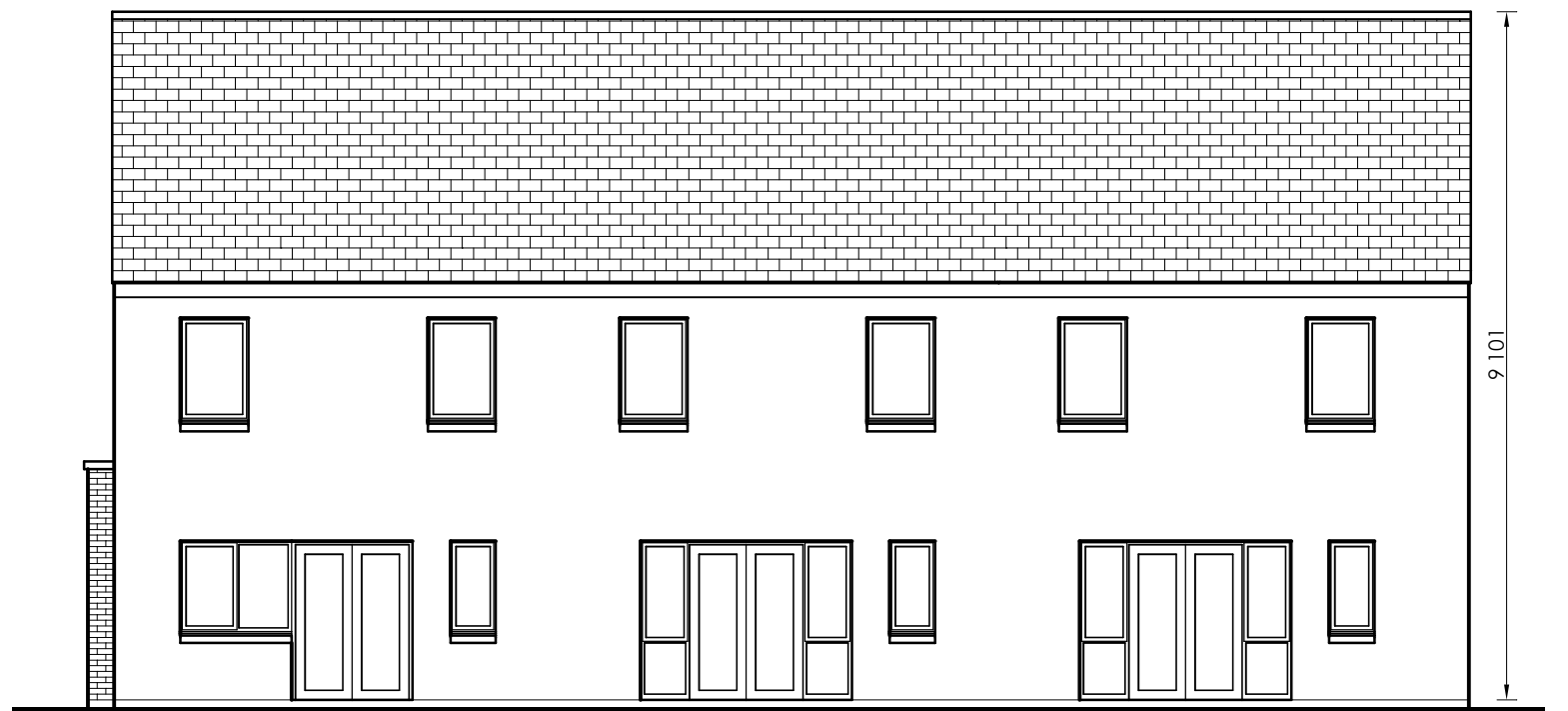
Scale 1:100



Side Elevation

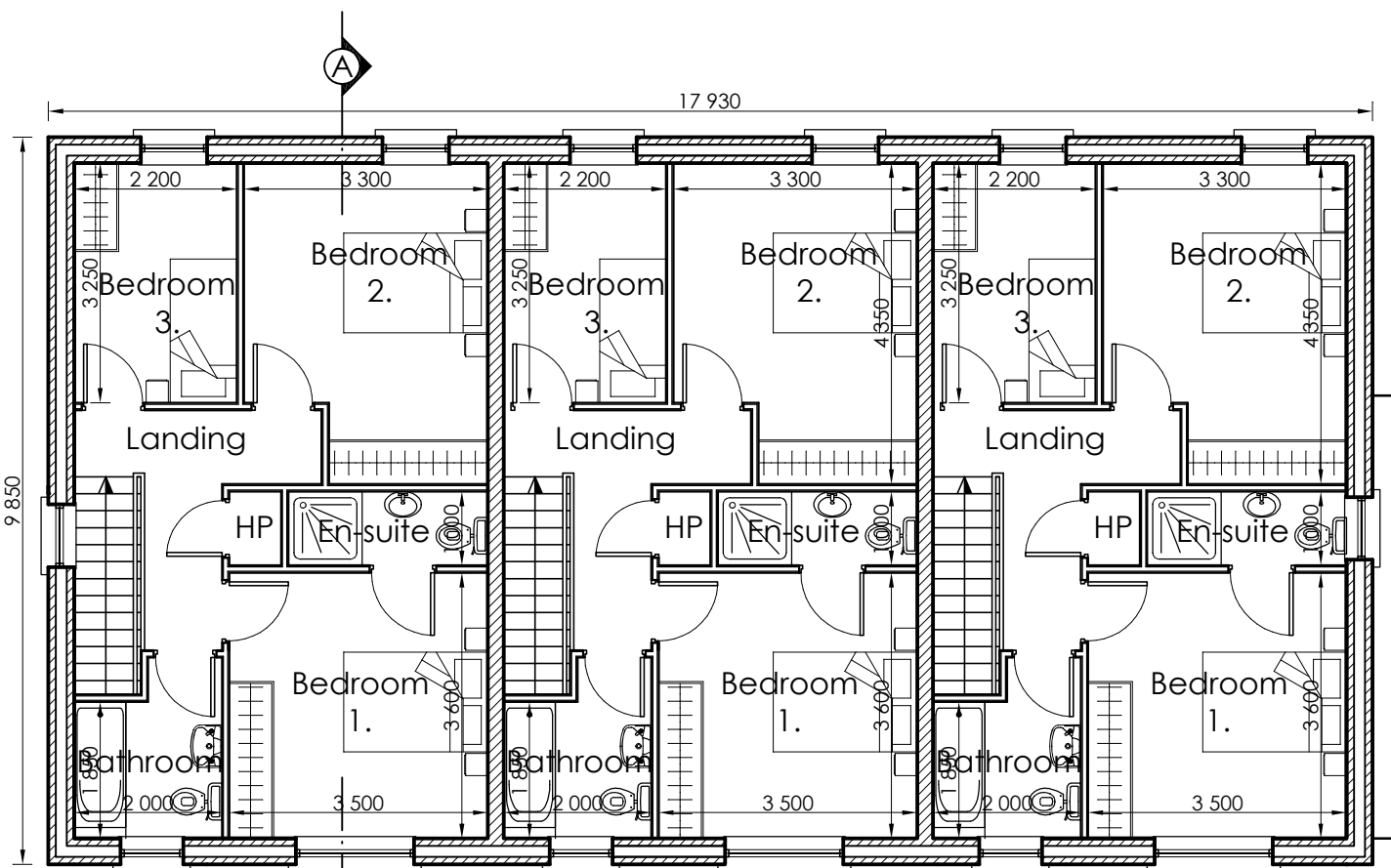
Scale 1:100

- Selected slate/tile to roof
- PVC fascia, soffit & guttering in selected colour
- Double/triple glazed PVC windows in selected colour
- Selected brick where indicated
- Selected plaster finish
- Smooth plaster plinth



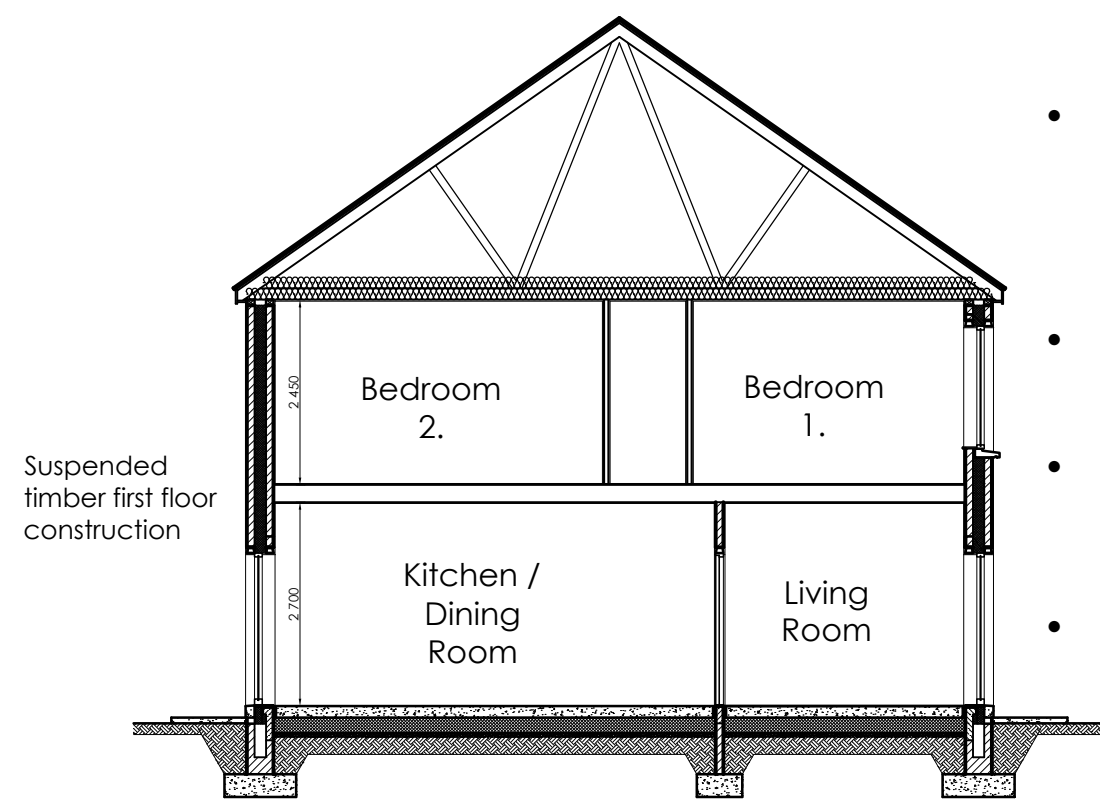
Rear Elevation

Scale 1:100



First Floor Plan

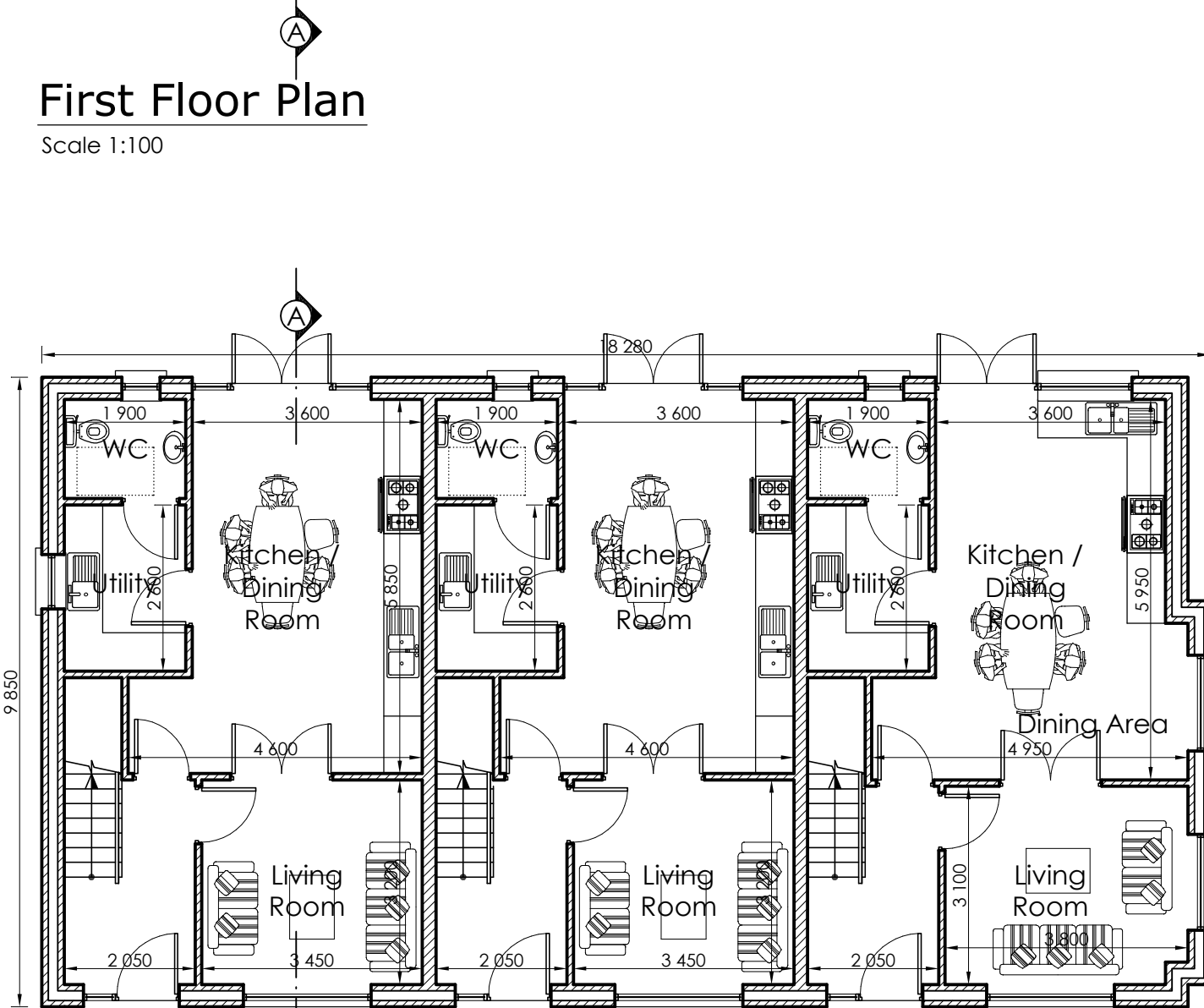
Scale 1:100



Section A-A

Scale 1:100

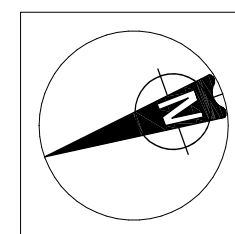
- Selected slates on 44 x 35 mm softwood battens on roofing felt on cut roof / prefabricated timber roof trusses
- PVC fascia, soffit and guttering
- External wall construction: Insulated cavity external wall construction
- D.p.c. min. 150 mm above conc. path.
- Conc. foundation, depth, size and reinforcement to suit site conditions



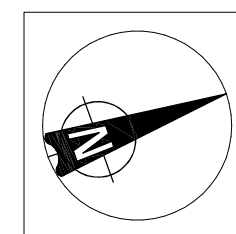
Ground Floor Plan

Scale 1:100

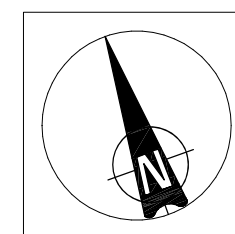
Windows stepped out in brickwork surround on dual-aspect end of terrace houses as appropriate



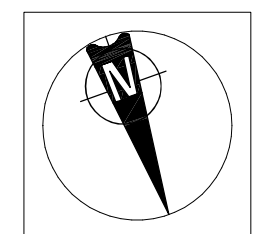
House No.: 330-335



House No.: 342-347




House No.: 348-350 & 382-384



House No.: 379-381

- 14 no. 3 Bed Terrace of 3, Type 'A' [102.5m²]
- 7 no. 3 Bed Terrace of 3, Type 'A' [104.3 m²] – Dual Aspect

Revision	Description	Date
 GLEESON MCSWEENEY		
Project	Proposed residential development at Ballykeeffe, Raheen, Limerick. For: DW Raheen Developments Ltd.	Stage Planning
Title	3 Bed Terrace of 3 Type A	
Scale	1:100 @ A2	Date December 2021
Drawn	M.M.	Rev
		Drg No. 1704-10-115
99 O'Connell St., Limerick		
T 061 412277 E info@gleesonmcsweeney.ie		

ARCHITECTS